



ChronoMap



**DRIVING TIME WITHIN
YOUR GEOGRAPHICAL ANALYSIS**

YOUR ANALYSIS AND DECISION MAKING

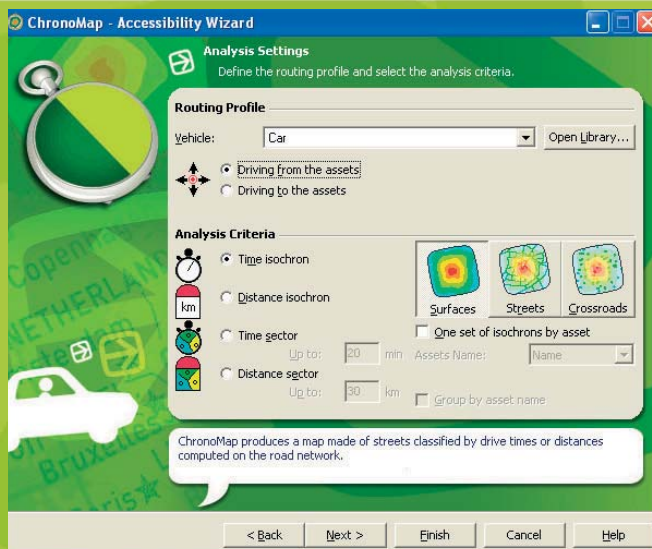
ChronoMap is the ideal tool for organizations analyzing the zones of influence of their assets and taking decisions regarding their location.

Whether you are logistics manager in a mass merchandising company, business development manager of an outlets network, in charge of operating a home delivery service or responsible of an emergency service, ChronoMap computes, simulates, visualizes using the most comprehensive and accurate digital roadmap databases and helps you optimizing your geographical settlements, anticipating competition, improving your services and making more efficient your field operations.



No compromise between accuracy and performance

Thanks to OPTI-TIME's technology, do not make any more compromise between accuracy and geographical coverage area: ChronoMap directly works on digital map databases that are accurate at the street number level while covering an entire country or even a continent.



1/ ISOCHRONES

What population will be able to reach my outlets within 10, 20 or 30 minutes? Therefore what is the expected revenue? ChronoMap computes in a single process the areas covered by your various outlets. Then, with MapInfo® Professional, you can use these geographical objects to intersect them with your behavioral data.

2/ REDISTRICTING

Beyond which limit customers will rather go to an other outlet? How much a new competitor will encroach upon my catchment area? What are the streets where each of my courier will be able to deliver? ChronoMap divides and displays the territories, possibly group them by brand, to help you better understanding and analyzing your business trends.



TOOL, EASY, ACCURATE, POWERFUL

CHRONOMAP : ANALYZE BUSINESS IN THE RIGHT WAY!



How much time to go to my theaters, my restaurants or my shopping outlets ? How much time does our urgency vehicles need to reach their intervention location? ChronoMap takes into account the travel way and minimizes either the driving time or the distance, so that the isochrones, the redistricting calculations and any other computing process are relevant for any kind of activity.



TAKING THE RIGHT WAY WHATEVER ONE'S VEHICLE

Numerous vehicles types (regular, emergency, truck, pedestrian, delivery ...), speed parameters for 15 types of ways (highway, main roads, street, residential area, ...), bridge heights⁽¹⁾,

hazardous materials⁽¹⁾, toll ways ... : ChronoMap will take the right way.

TRAFFIC STATISTICS

The traffic statistics allow taking into account the traffic speed variations throughout the day in order to get the most relevant results.⁽²⁾

CHRONOMAP : DRIVE AROUND FORBIDDEN AREAS ...

From simple polygons in MapInfo® Professional, ChronoMap allows creating areas which are forbidden to driving and which will be taken into account in the routing, mileage chart, isochrones and redistricting calculations.

3/ SECTORS COMPARISON

What is the size of my new sectors? Who is winning and who is losing shares of territories? From two MapInfo® tables representing for instance your current points of sales and your future outlets, ChronoMap helps you understand your growth potential and your market shares development expectations.



DEPART	A. GUMBECHTOM	A. GUMERY	A. GUMBAIE	A. GUMERES	A. GUMAROD
<input type="checkbox"/> ABERCOURT	04:42:17	02:57:55	07:55:30	07:06:59	06:47:27
<input type="checkbox"/> ABERNANG	02:03:10	04:09:51	05:18:09	04:29:45	05:21:02
<input type="checkbox"/> ARBEVILLE	05:43:40	03:30:05	08:43:19	07:33:36	07:14:03
<input checked="" type="checkbox"/> ARBEVILLE-LA-RIVIERE	05:52:40	01:57:54	06:43:50	05:16:39	04:57:06
<input type="checkbox"/> ARBEVILLE-LES-COMPLANS	02:17:47	03:05:02	07:01:25	06:13:01	06:04:19
<input type="checkbox"/> ARBEVILLE-SAINT-LUCIEN	05:40:06	02:49:06	08:01:20	06:51:37	06:20:04
<input type="checkbox"/> ARBEVALLERS	02:44:36	04:33:06	05:41:05	04:52:41	06:43:59
<input type="checkbox"/> ARBELHAN	08:57:03	07:39:53	03:21:04	04:31:56	04:51:03
<input type="checkbox"/> ARBELCOURT	03:12:52	03:54:59	06:52:20	06:03:56	06:55:13
<input type="checkbox"/> ARBE	12:17:24	09:24:18	06:41:26	07:20:31	04:50:19



4/ MULTICRITERIA ISOCHRONES

What are the most favorable areas to set up a new office or a new warehouse? ChronoMap can simultaneously combine several accessibility criteria according to your own specifications and compute and display the optimal geographical areas.

5/ INDIVIDUAL ASSIGNMENT

What is the nearest distribution center of each of my 8 600 customers? In a single process ChronoMap provides for every customer the name of the nearest distribution center, its driving distance and its driving access time.

6/ ROUTING

What is the best route to visit my 4 customers during 45 minutes each and arrive at 3:30 pm at the last one? ChronoMap gives the planning and the roadbook and can use, when available, the traffic statistics⁽²⁾ to take into account the traffic speed variations.

7/ MILEAGE CHART

What are the closest drugstores within 10 km around every doctor? ChronoMap knows the answer! Thanks to its partial mileage chart feature, that can take distance, access time and number of points limits, such a query becomes a child's play for ChronoMap even on an entire country.

(1): when available in the database used and providing the user has purchased the corresponding license.
 (2): when available in the database used.

ANALYZE YOUR TERRITORIES IN A FEW CLICKS!

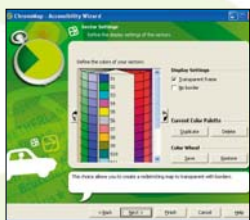
1 - Display your agencies



2 - Define the analysis criteria



3 - Set the display parameters



4 - ChronoMap figures out your catchment areas



ChronoMap

is an add-on software to MapInfo® Professional (version 7 or later)

SYSTÈME REQUIS :

ChronoMap for MapInfo® Professional works on Microsoft® Windows® NT4 sp6, 2000, Millenium, XP platforms
Minimum memory configuration : 512 MB

For any additional information

OPTI-TIME SA

E-mail : info@opti-time.com

Web : www.opti-time.com

TECHNICAL SPECIFICATIONS

ISOCHRONES, SECTORS, ASSIGNEMENT

- > Shortest distance or quickest time computing
- > Going to or coming from the assets
- > Surface, streets or cross roads graphical representation
- > Up to 4 096 independent starting points for isochrones
- > Up to 65 534 independent starting points for separate isochrones
- > Up to 4 096 sectors
- > Up to 1 048 575 points to be assigned and 4 096 starting points

ROUTE AND MILEAGE CHART

- > Shortest distance or quickest time computing
- > Choosing a starting time or arrival time
- > Possibility of defining an even break at each stop
- > Route can be computed either keeping the given order of stops or optimizing the stops order (feature limited to 10 points)
- > Partial mileage chart with driving distance, access time or number of points limitations
- > Up to 262 144 starting or arrival assets for a mileage chart calculation (knowing that a MapInfo® table can only manage 67 108 864 records)

VEHICLES

- > Numerous vehicles profiles and speed settings according to route types
- > Possibility of avoiding toll ways and favoring major roads
- > All ChronoMap computing and analyses can use the traffic statistics concept where available.⁽¹⁾
- > Truck attributes (Weights and heights with 16 values each, Wide or long vehicle, trailer, hazardous materials, inflammable products, water polluting materials)⁽²⁾

AVAILABLE DIGITAL ROADMAP DATABASE AND COUNTRIES

ChronoMap can be used with any type of digital roadmap database that comply with the OPTI-TIME default format. It is plug-and-play with Navteq® and Tele Atlas® databases and can be used on all areas covered by those publishers in their standard format: Europe, North America, Latin America, Asia-Pacific⁽³⁾

(1): when available in the database used.

(2): when available in the database used and providing the user has purchased the corresponding license.

(3): according to the list of countries covered in those Navteq® ou Tele Atlas® territories.

SOME OF OUR REFERENCES:

Auchan France, Auchan Mexico (MX), Auchan Spa (IT), Bank Raiffeisen (CH), Bell Canada (CA), Bornemouth Council (UK), CanWest Global (CA), Carglass, Carrefour, Castorama, Commissions scolaires au Quebec (CA), Crédit Agricole, FNTP, Giraudy, INSEE, Leclerc, AC Nielsen Srl (IT), Europlex Cinem-London (UK), Geodis (IT), Iguasport/Decathlon (BR), Intersport (BE), Jones Lang Lasalle (ES), La Poste Suisse (CH), Lisbon University (PT), L'Oréal Italia (IT), MediaMarket spa (IT), Mobistar (BE), North Yorkshire City Council (UK), Novartis (CZ), Pingo Doce (PT), Renault Italia (IT), Thalès, Unisys (BR) ...