



The multi-platform component to efficiently develop your mapping and routing application in Windows and Linux environment

ChronoMap Developer Kit: the all-in-one developer package

ChronoMap® Developer Kit comes with all components and data to develop your application:

- the core routing component from Magellan Ingénierie
- the geocoding component to easily position any address on the map
- the cartographic data packaged by Magellan Ingénierie in an optimized format for high-quality display.
- the mapping component to display your results on the map (Windows only)

ChronoMap Developer Kit: years of expertise at your fingertips

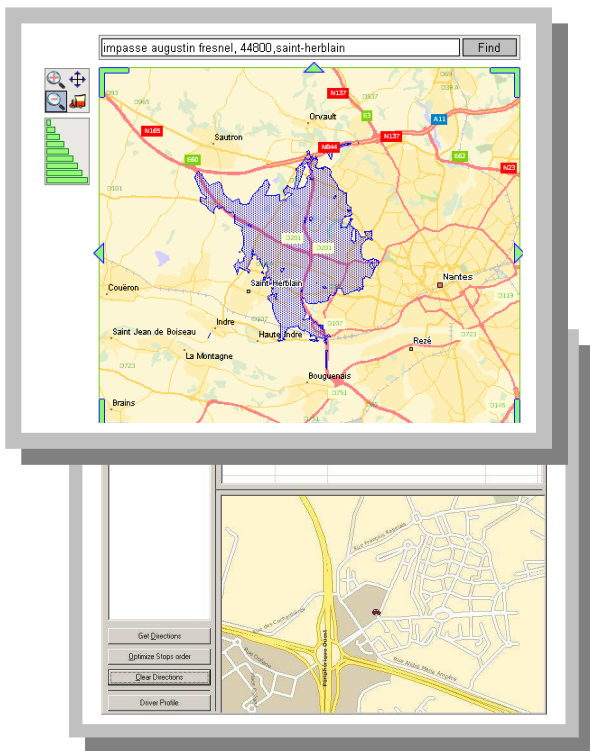
ChronoMap Developer Kit is your passport to the world of road databases and mapping.

Nothing seems more familiar and simple than looking at a map and calculate a distance. But it requires a lot of experience and competences to make it accurate, fast and smart.

ChronoMap Developer Kit includes this know-how and this complexity and offers it to you through high-level routines easy to understand and use.

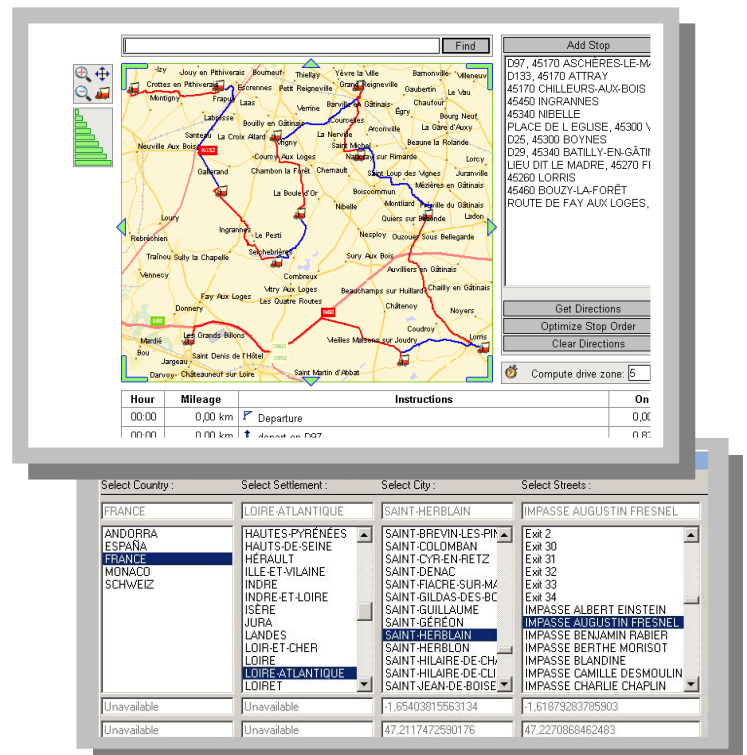
Examples of applications made with ChronoMap Developer Kit

Drive zone



High-quality display

Routing directions, drive time and distance



City and Street Explorer

ChronoMap Developer Kit can be deployed on any kind of platform: on stand-alone PCs, on client-server architecture or on an Internet architecture. On any of these environments, it will be now very easy to empower your applications with routing and mapping services.



Main features of ChronoMap Developer Kit

Compute Drive time and distance

ChronoMap® Developer Kit performs simultaneously drive time and distance analysis while optimizing one of these criteria. ChronoMap® Developer Kit does not limit departures and arrivals points to fit nodes in its road navigation database: it uses curvilinear positioning and dynamic network segmentation to allow processing of your locations.

Mileage chart

ChronoMap Developer Kit® includes a specific method for **mileage chart** building calculations (in time and distance). Such method is extremely fast thanks to dedicated treatments like for instance "one-to-many" or "many-to-one".

Routing Directions

ChronoMap® Developer Kit will compute shortest and quickest route from departure to arrival, including way points and will output but best possible road book and road map for the end-user.

Geocoder

ChronoMap® Developer Kit provides function for controlled address input, semi-automated geocoding, batch geocoding and reverse geocoding *.

*: geocoding function availability depends on countries

Drive Zones

ChronoMap® Developer Kit renders high quality Drive Zones areas ready to display onto your maps or to feed in your classical GIS environment to process drive time based spatial selection.

Sectors

With ChronoMap® Developer Kit, Identify multiple facilities and compute sectors based on drive time: ChronoMap® Developer Kit will identify the potential district/sector for each of the facility.

Assignments

Given a set of facilities and a set of customers, ChronoMap® Developer Kit unique assignments feature will automatically assign each customer to the nearest, drive time or distance wise, facility.

Driving behaviour

ChronoMap® Developer Kit comes with a VehicleProfile object that will let you customize driving speed, preferred roads and quickest or shortest route queries.

ChronoMap® Developer Kit exists in Windows and Linux version

Windows

ChronoMap® Developer Kit for Windows requires Windows NT 4.0 sp3 and above, Windows 2000, or Windows XP to execute properly. Building

ChronoMap® Developer Kit for Windows is packaged either as a 32-bit COM DLL which can be accessed directly by ASP, Visual Basic, and other COM supported environments such as Borland Delphi. ChronoMap® Developer Kit for Windows is also packaged as a standard C DLL which can be used thru the provided C++ Framework, providing direct access to objects without getting COM ruling in the way.

Linux

ChronoMap® Developer Kit for Linux is built and tested on Debian Sarge 3.1 for i386 and x86_64 architectures

ChronoMap® Developer Kit for Linux is packaged as a standard shared library which can be used thru the provided C++ Framework

OPTI-TIME product range

Large product portfolios to answer best your needs and requirements:

- **Add-on solutions:** Turn-key applications (TourSolver for MapPoint or MapInfo, ChronoMap for MapInfo, Geocoder). Desktop-only.
- **Integrated components:** "all-in-one" programming components (include: viewer, maps, etc.). For customized desktop or server applications development.

For local sales and support, please contact:

DataGis GmbH
Johann-Strauß-Str. 26
70794 Filderstadt
Tel.: 07158 940267
E-Mail: info@datagis.com
Web: www.datagis.com

Learn more about OPTI-TIME product range, extension and integration possibilities, software developer kits: www.opti-time.com